

# County Planners Approve Two Apartment Projects

The county planning commission recommended approval Thursday of zoning for two apartment projects and turned down two. The commission also gave partial approval to a proposed industrial park while rejecting another.

Approved for apartments were a 3.28-acre tract on Denlinger Rd. at Knigsfort Rd. in Madison Twp. and 2.2 acres on the west side of Riverside Dr. north of Rydale Ave. The former would be a project of General Developers Inc. and the latter of Emerson H. Buckingham.

**TWO REQUESTS** totaling almost 20 acres at Alexandria-Bellbrook and Lamm-

Rds., Miami Twp., were heard as one case and rejected. The owners are Hyde Park Development Co. and Dale E. and Dorothy Putnam.

Also rejected was a 1.7-acre proposal on Salem Bend Dr. in the township zoning section of Madison Twp. The request was from R. C. Cook and Morris Goldberg.

County commissioners will make the final decision in all cases but the last, which will be made by Madison Twp. trustees.

**REALTOR** Donald E. Stout appeared for Raymond and Cleo Bolton, owners of 100 acres in Mad River Twp., to seek light industrial zoning. Stout, who said he has com-

pleted development of a 60-acre abutting tract in a similar manner, said the Boltons' land between State Routes 4 and 69 and Valley Pk. would be for light industry. The area north of Valley Pk. would be for office buildings.

B. E. Clark, county planning director, said these uses would be compatible with density requirements of the four-county Wright-Patterson airport zoning law.

**DAVID DURHAM**, a member of Clark's staff, suggested rezoning be deferred on the northern tract until completion of the county's new zoning regulations, which will have a category specifically for office parks.



"Why can't you learn to hibernate all winter?!"

Disapproved was a request by Harold and Cora Shaffer for heavy industrial zoning for 69 acres on the south side of Shull Rd. in Wayne Twp. It abuts property owned by the Deceana Corp. which is zoned for light industrial.

Robert B. Shearer, spokesman for the corporation, said the rezoning would permit expansion of the firm's develop-

# Internal Skirmish Brewing Over Credit Union Election

By PHIL SKARDON  
Daily News Staff Writer

Another internal skirmish involving the IUE 801 credit union looms Sunday when directors will be chosen.

Local 801 president Joe Saump has come out with a slate. So will Herman Saylor, credit union treasurer. Saylor believes the issue is simple:

If his slate is chosen, he will continue as treasurer. If Saump's is given the nod, Saylor is out and the current collection agent, Dale Randall, is in.

**SAYLOR** said the apparent move to dump him stems directly from his supporting

credit union employees in their effort to bring in an outside union.

They voted recently for the Office & Professional Employees union and now face the ironic task of having to bargain with Local 801 for a contract.

"They want to control that credit union," Saylor said of Saump's people. "And I don't want them to. Local union politics cannot enter into a credit union."

He said he feels directors shouldn't be officers of the local. One of Saump's selections, Bill Goubeaux, is vice president of the local.

Others on the Saump slate are Hubert Sexton, Leo Williamson and Robert Mansfield. Saylor also includes Mansfield, a retiree. His additional choices are Ernest Connolly, Floyd Freeman and John Howard.

**SAYLOR** at 65 is three years from mandatory retirement age. However, he wishes to retire in a year if he can find a satisfactory replacement.

In a handbill to be distributed shortly, he said, "I pledge to work with this person and endeavor to teach him to continue the same type of operation and growth we have enjoyed in the past."



**JANE HAMILTON**  
To Report on Program

## UMATT Exec Due In Africa

Jane Hamilton, vice president of the Dayton-based UMATT "Flying Peace Corps," leaves for East Africa next week to observe and report on Wings for Peace operations there.

Her reports will be carried in The Daily News, other newspapers and on television. Her six-week trip into the African bush is being sponsored by a grant from Hartfield Endeavor, Wilmington, Del.

**UNITED** Missions Air Training and Transport Inc. is a non-profit charitable organization which operates light planes for missions of mercy and development in Africa.

Miss Hamilton, a free-lance writer on leave from the University of Dayton's English department, has been in charge of promotion for the Wings for Peace group. She is also a pilot and has studied and lived in the Orient.

Miss Hamilton said she plans to leave Dayton next Friday. She will meet with UMATT Wings for Peace groups in Dublin, London, Aachen, Rome and Addis Ababa before her scheduled arrival in Nairobi on Feb. 20.

## Marines Driven Back In Hue Scrap

Continued From Page 1

John Lengel said. "There are islands of government resistance and islands of Viet Cong strength."

"Well, they can't stand many more days like that," an American general said Thursday, glancing up from an enemy casualty report.

**ALLIED SPOKESMEN** said that in the first four days the Communists lost 10,593 killed, 3,076 suspects captured and 2,000 weapons seized. They said 917 allied troops were killed and 2,817 wounded—including 281 American dead and 1,195 wounded.

Untold thousands of wounded in the Viet Cong offensive that swept into every major city along a 600-mile line from Quang Tri near the Demilitarized Zone to the Mekong Delta.

President Nguyen Van Thieu put the Saigon toll alone at 1,882 civilians killed or wounded.

South Vietnamese bombers in Saigon, strafed a block of houses near the race track in the southwestern end to clear out Communist troops. There was fighting in at least a half-dozen other spots in Saigon.

Bands of guerrillas roamed the capital's streets, sniping at helicopters approaching the top of the six-story U.S. Embassy building. South Vietnamese rangers caught one group of Viet Cong eating soup at a sidewalk restaurant.

Machine-gun fire rattled around the Saigon hospital, which was already crowded with casualties. Helicopters bringing emergency food supplies were fired on by Viet Cong snipers. Another hospital reported treating 300 civilian casualties in the last 48 hours.

**COMMUNIST TROOPS** were reported to have made their way into Moe Hoa, a provincial capital 50 miles southwest of Saigon.

**ENEMY FORCES** cling to footholds in the mountain resort of Dalat, 140 miles northeast of Saigon.

Communist forces hit for the first time at Phu Quang, on Highway 13, about 12 miles north of Saigon.

Shooting continued at My Tho, provincial capital in the Mekong Delta.

Communist troops also struck for the first time at Bana, provincial capital and a farm and fishery center on the South China Sea 40 miles southeast of Saigon.

There was fierce fighting at the airfield of Vinh Long.



## SAVE 40% ... if you're looking for a carpet bargain that's colorful, elegant, practical, rugged... easy-to-care for ... at a down-to-earth price ...

### see Cabin Crafts' luxurious sculptured Acrilan® broadloom in your choice of 8 most wanted colors



**NOW ONLY**

# \$699

**SQ. YD.**

REGULAR \$11.95 SQ. YD.

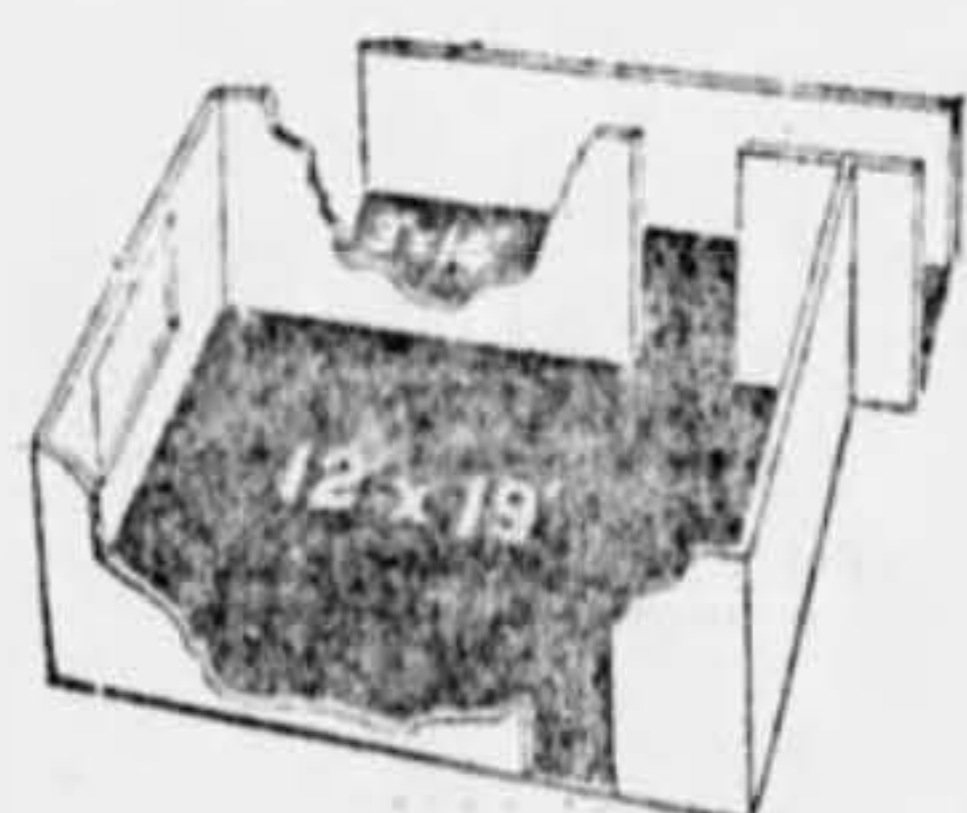
### Check These Quality Features:

- Luxurious appearance
- Resilient feel
- Superb stain resistance
- Luscious colors
- Traffic hiding texture
- Easy-to-clean
- Mothproof, mildew proof and non-allergenic
- Built for years of wear
- Best value for your money

### Check These Color Selections:

- Amber Gold
- Spice Gold
- Bitter Olive
- Green Olive
- Dove Beige
- Golden Beige
- Perno Green
- Ruby Red

#### ESTIMATED COSTS FOR AVERAGE INSTALLATION

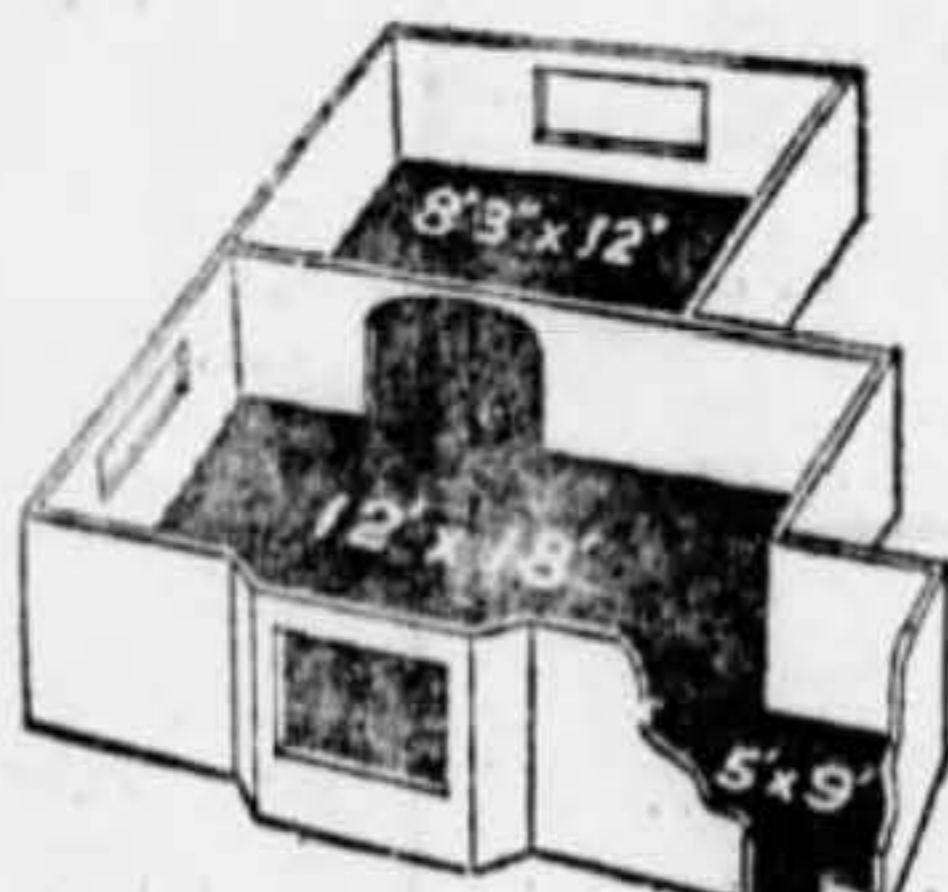


3'x14' Hall  
12'x19' Living Room

30 sq. yds. with padding and installation

For example a 3'x14' hall, 12'x19' living room, completely installed with heavy waffle pad and Town and Country's custom installation \$305.08

**\$11<sup>43</sup>**  
per month

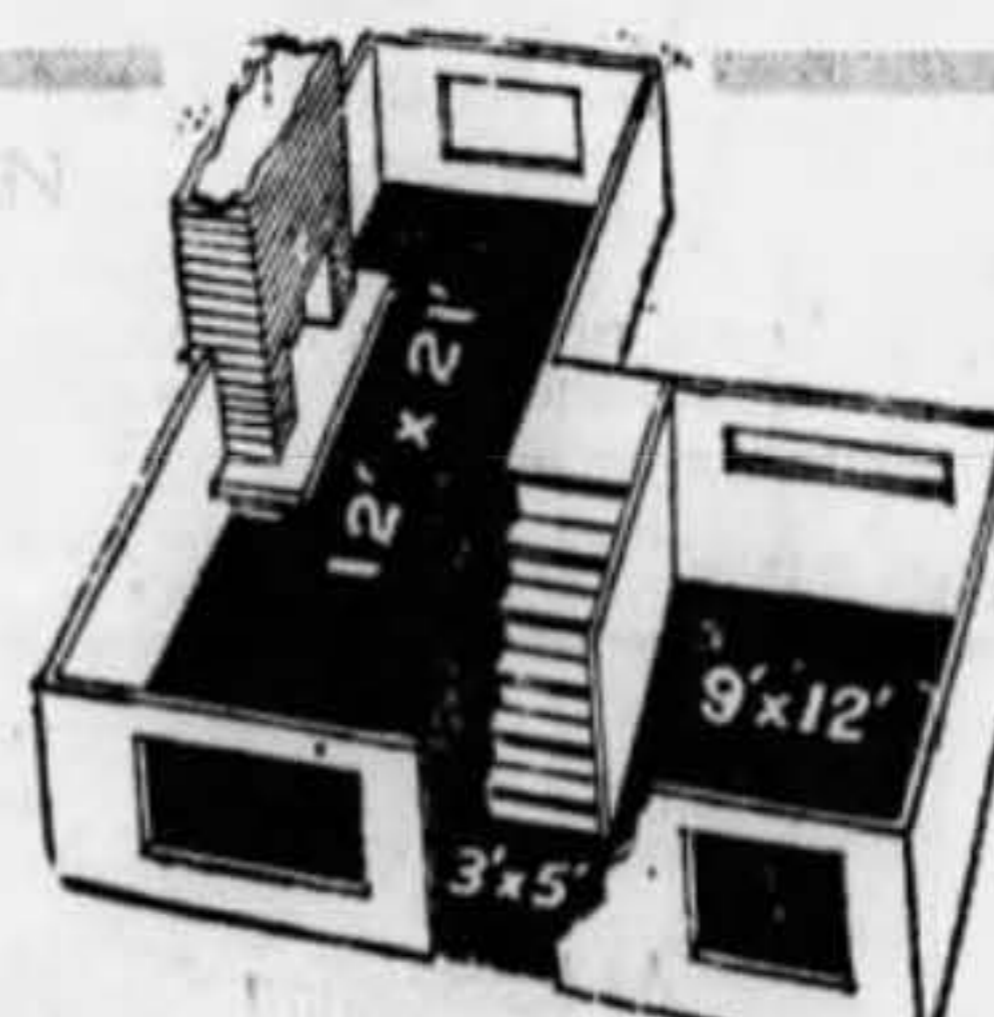


8'3"x12' Dining Room  
12'x18' Living Room  
5'x9' Foyer

40 sq. yds. with padding and installation

Average 8'3"x12' dining room, 12'x18' living room, 5'x9' foyer completely installed with heavy waffle pad and Town and Country's custom installation \$406.77

**\$15<sup>22</sup>**  
per month



12'x21' Living Room  
9'x12' Dining Room  
3'x25' Stairs and Hall  
3'x5' Foyer

50 sq. yds. with padding and installation

A typical 12'x21' living room, 9'x12' dining room, 3'x25' stairs and hall, 3'x5' foyer completely installed with heavy waffle pad and Town and Country's custom installation \$508.46

**\$19<sup>05</sup>**  
per month

OTHER FINE CARPETS FROM \$2.88 up to \$19.99 sq. yd.



# town & country

FURNITURE SHOPS CARPET CENTERS

- open daily 12-9
- Saturday 10-9
- Sunday 1-5

**DIAL**  
293-6903  
or  
278-5858 FOR SHOP-AT-HOME SERVICE



**TOWN & COUNTRY:** stroop at shroyer 293-6903

• **MIRACLE LANE:** 3030 salem avenue 278-5858